



HARMONY

Roof Trusses - Open Web Metal Joists - Timber Frame - Spandrel Panels - Glulam Engineered Beams





...
Behind every great
project there is a
great supplier
...

CONTENT

- 2 About Us
- 4 Timber Frame
- 8 Roof Trusses
- 12 Open Web Metal Joists
- 14 Spandrel Panels
- 16 Glulam Engineered Beams
- 18 Environment
- 20 Contact Us

ABOUT US

“ Our flexibility and ability to adapt to different requirements, tight deadlines, difficult builds and changes to legislation makes us the perfect choice for all of your timber frame needs. ”

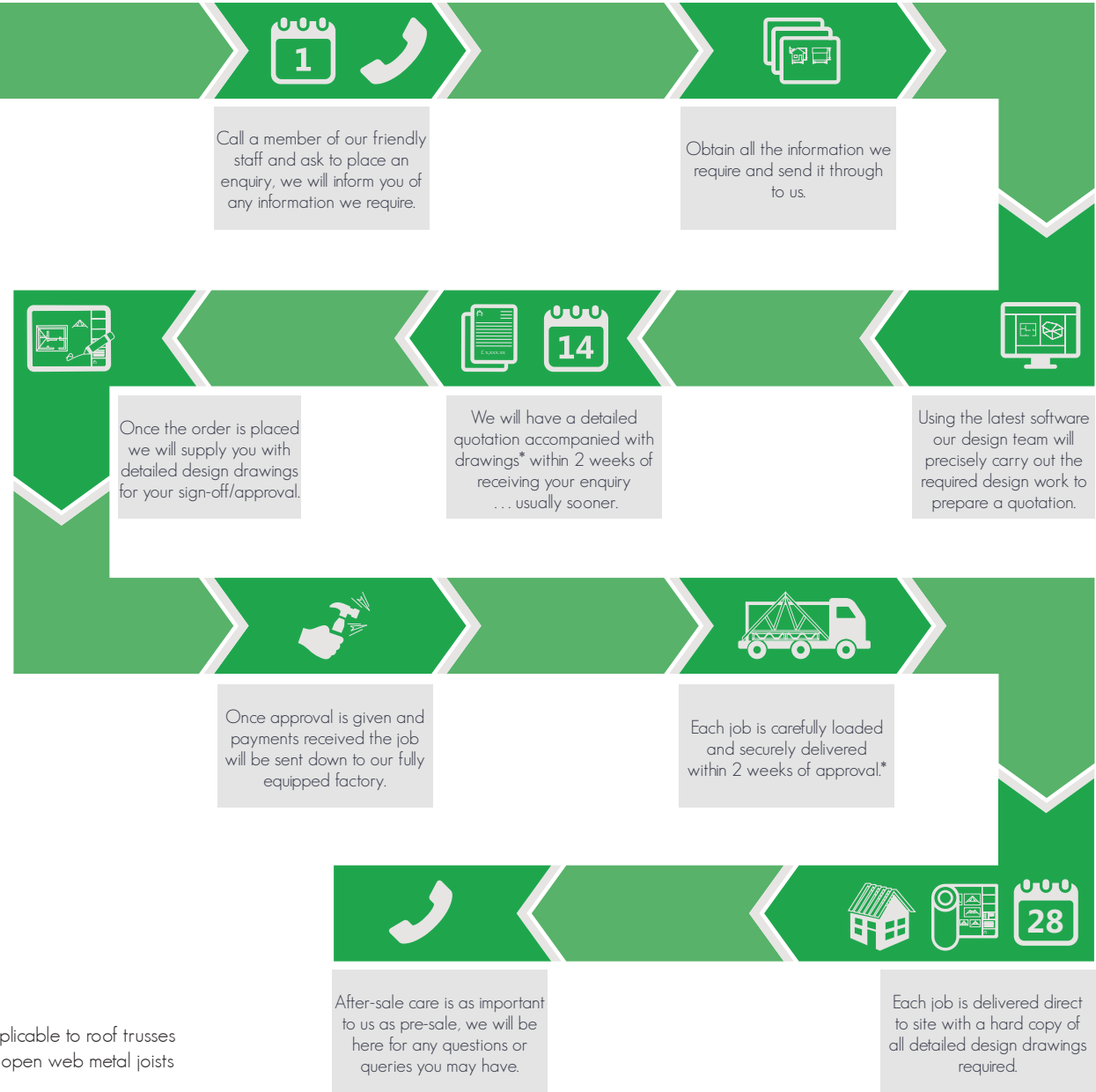
We are proud of our reputation within the timber frame industry as both practitioners and innovators; supporting developers, self-builders and specialist builders. With a proven management team based in Kent, we have an exceptional knowledge of both timber engineering and energy efficiency in modern methods of construction, Harmony Timber Solutions UK & Harmony Timber Frame UK continues to grow and deliver high quality products and services.



Units 1B & 2A
Canterbury Ind Park
Hersden, Canterbury
Kent CT3 4HQ
T (+44) 01227 712 322
F (+44) 01227 712 852
E info@harmonytimber.co.uk

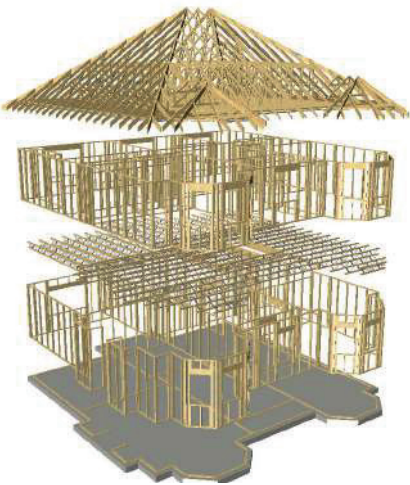


• Applicable to roof trusses and open web metal joists

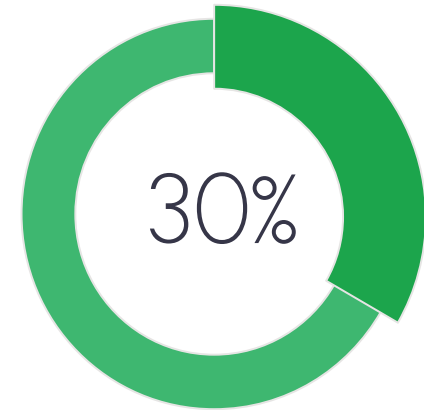


TIMBER FRAME

Full technical information available upon request



“ They were extremely professional, helpful and competitive. ”



With a typical 2 storey house our clients benefit from an approximate 30% saving on construction time.

This stretches to 50% on 4 storey houses.

Within a working week a fully erect and water tight structure can be achieved.



Each feature of our timber frame panels are purposely specified to give a high quality, valuable and hassle free solution.

Understanding the end users needs, our experienced team can provide an option which best suits their requirements. We realise that these needs span further than the material specifications, thats why we offer full design and engineering services, quality assurance, site visit assistance, erection services and technical guidance.



Open Panel

Open panel construction has been evolving over the last 40 years. An open panel is studwork sheathed with Ply or OSB with a breathable, waterproof membrane fixed to the outside. Insulation is then fitted after installation, before a vapour proof barrier is tacked into place and then internal lining with plasterboard.



SUPPLY & FIT

We pride ourselves on the high quality of our construction teams.

We provide Timber Frame fitting teams which have a unique quality regarding their attention to detail and pride in their workmanship.

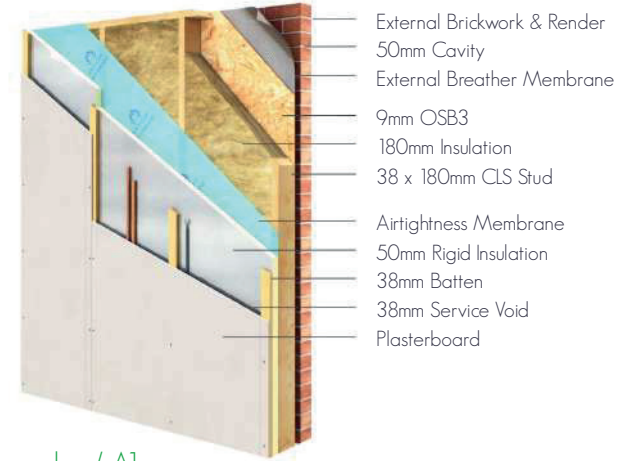
We also provide strict quality checks on site which ensure that our timber frame kits are fitted in accordance to our entire standard and bespoke details for each project.



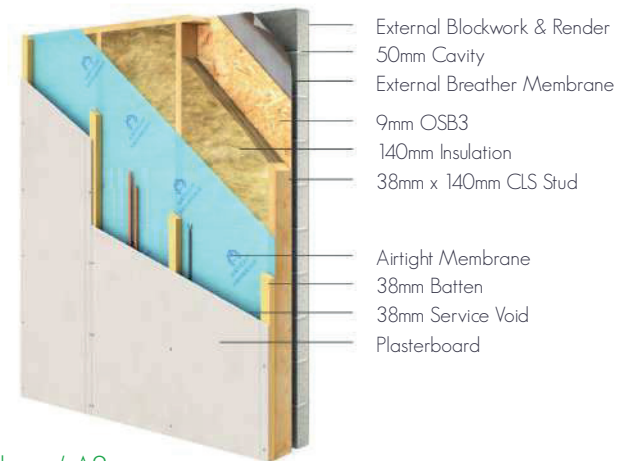
Timber Frame Features	Timber Frame Benefits
Factory built	Reduced site waste - No offcuts, less clean-up!
Renewable materials	Environmentally friendly - Keeping your project as green as possible!
Thermal & insulation options	Energy efficient - Reducing heat loss, saving on utility bills!
Air tightness	Increased energy efficiency - Even further savings on utility bills!
Reduced labour times	Earlier introduction of other trades - Progress to interior work sooner!
Speed of construction	Greater cost savings - Less time on site, time is money!

OUR WALL OPTIONS

For more technical information and for bespoke options please contact our technical department



Exemplar / A1
U value - 0.12W/m²K
Overall Width - 440mm



Urban / A3
U value - 0.21W/m²K
Overall Width - 347mm



Minimal U value

We test our panels for a U value rating to give a quantifiable measurement of the heat loss performance.
The lower the U value, the lower the heat loss and the higher the level of insulation.



Eco / A2
U value - 0.14W/m²K
Overall Width - 397mm

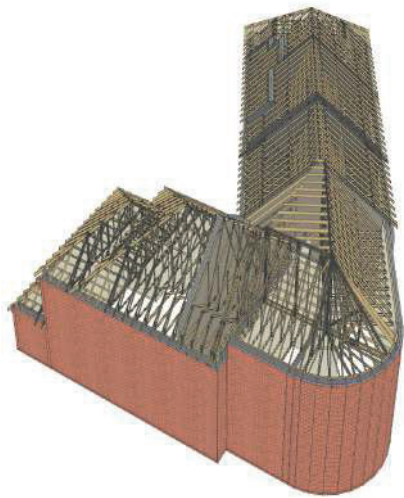


Superior airtightness

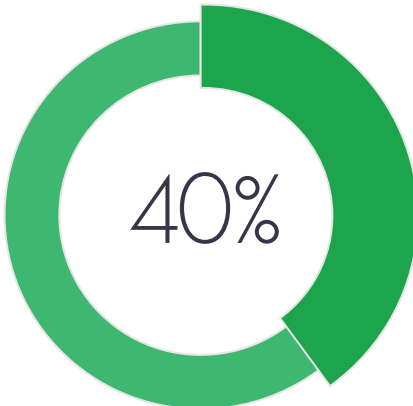
Every closed panel features a continuous seal which eliminates unintentional air leaking in or out of the building, resulting in; lower heating bills, well performing ventilation systems and fewer draughts.

ROOF TRUSSES

Full technical information available upon request

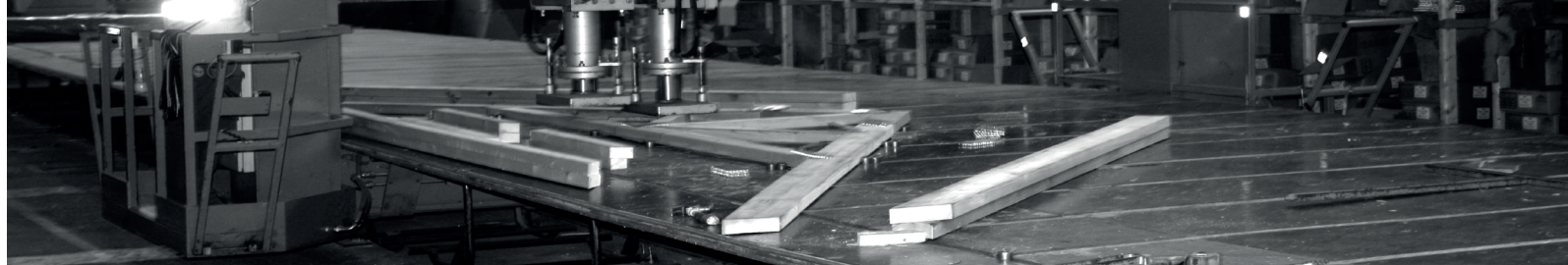
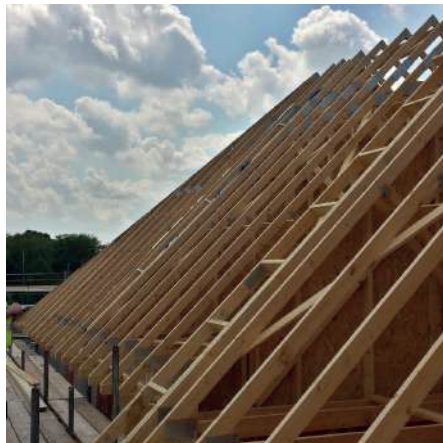


“ Innovative and competitive in their design and price, understanding and flexibility in their service and delivery. ”



Roof trusses use up to 40% less timber than traditional roof structures.

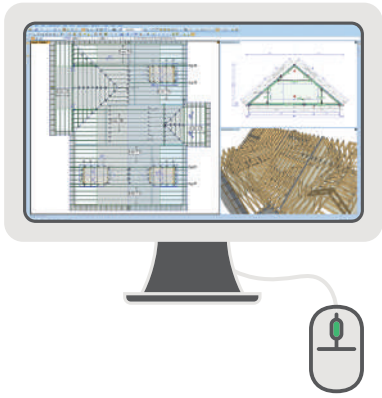
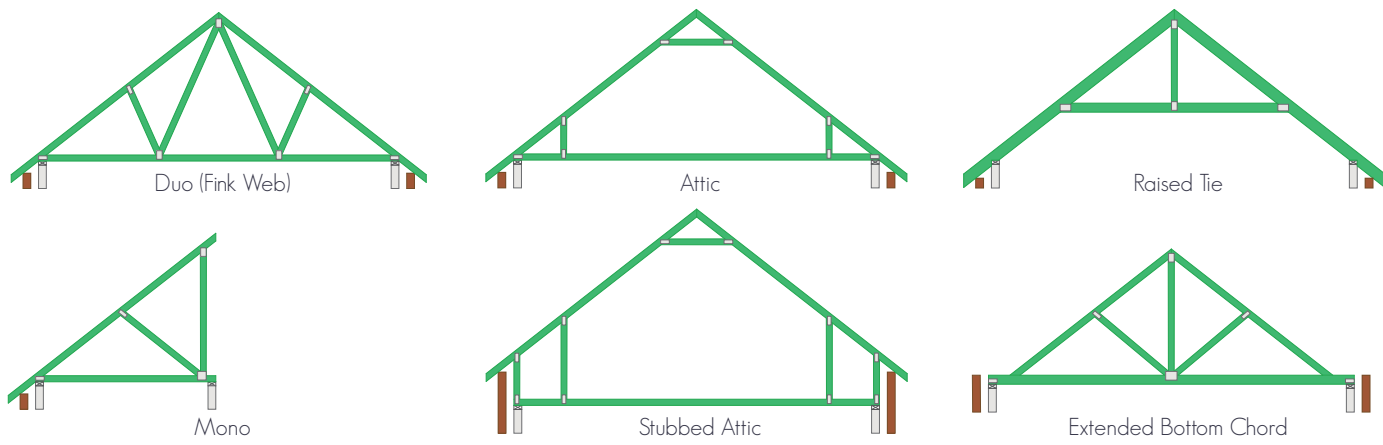
Each truss is analysed to obtain the most economic, low timber usage solution; this combined with the dramatic reduction of site waste gives the structure the lowest environmental impact possible.



The versatility of roof trusses knows no bounds. From standard mono trusses offering a simple structure to the most complex attic, raised tie or stubbed trusses; our design teams experience and innovativeness allows them to offer solutions to the most complex roof structures.

Using TR26 graded timber, our trusses benefit from a low carbon footprint, exceptional strength and high quality.

Every quote is supplied with a layout drawings and profiles of each truss type used, giving the client a clear understanding of our proposal.



Every member of our truss design team is fully trained and able to use the the most advanced software when designing and analysing the roof structure to Eurocode 5.

Designing to new Eurocode 5 regulations, our design team can offer the most efficient and workable solution possible.

The software offers a real time 3D visualisation which is used to give our clients a clear interpretation of what we are proposing.

We encourage our clients to visit our offices to outline plans they have, discuss their project with our design team, resolve any questions or queries they may have and help make a complex structure clearer.

Loose Timber
Supplied with roof kits when
trusses are not feasible
(more roof truss info pg 8 - 9)

Dormer material
Available in loose
timber or pre-fabricated

Gable Ladder
Prefabricated and
supplied with roof kits
(more roof truss info pg 8 - 9)

Attic Trusses
Straight run, offering a
'room in the roof' solution
(more roof truss info pg 8 - 9)

Gable panel
With pre-fabricated
window opening
(more gable panel info pg 14 - 15)

Engineered Timber Lintel
Pre-cut to size or cut to size on site
(more laminated beam info pg 16 - 17)

Timber frame
Open panels shown, closed
panel options also available
(more timber frame info pg 4 - 7)

Timber frame
With pre-fabricated door opening
(more Timber frame info pg 4 - 7)

Just Add:

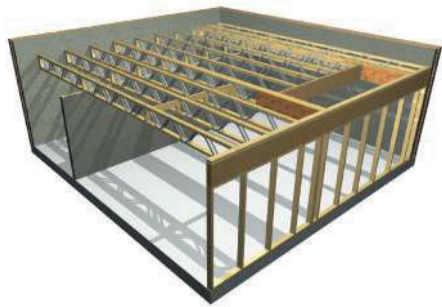
- External brickwork
- Roofing materials
- Windows & doors
- Stairs
- Electric & plumbing



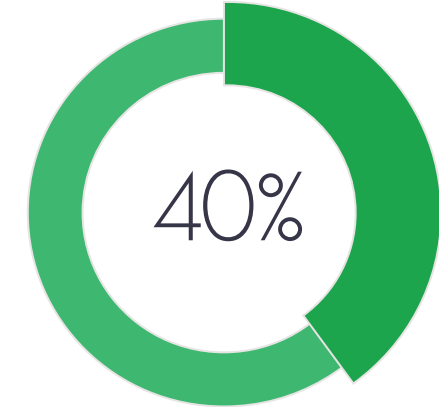
OPEN WEB METAL JOISTS



Full technical information available upon request



“ They provide a fast, friendly and efficient service from designs, through to delivery on site. ”

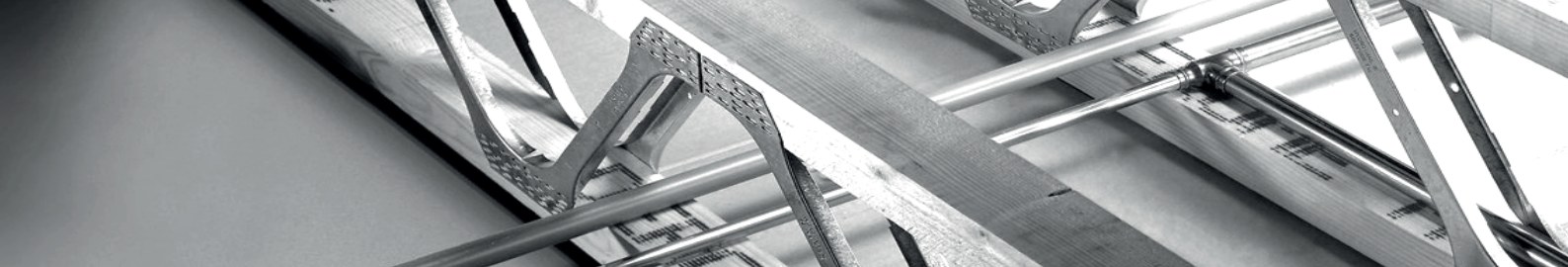


Ranging from 202mm to 421mm deep and up to 12m long, our open web metal joists offer an adaptable, lightweight, durable and smart solution for any flooring requirements.

The aspect of this system which helps maintain its position as the most favorable flooring product for house builders worldwide is the large clearing between the struts, offering space for plumbers, electricians and heating contractors to utilise.

Combining the strength of metal struts with the lightness of timber allows our open web metal joists to be an extraordinary 40% lighter than comparable solid joists.

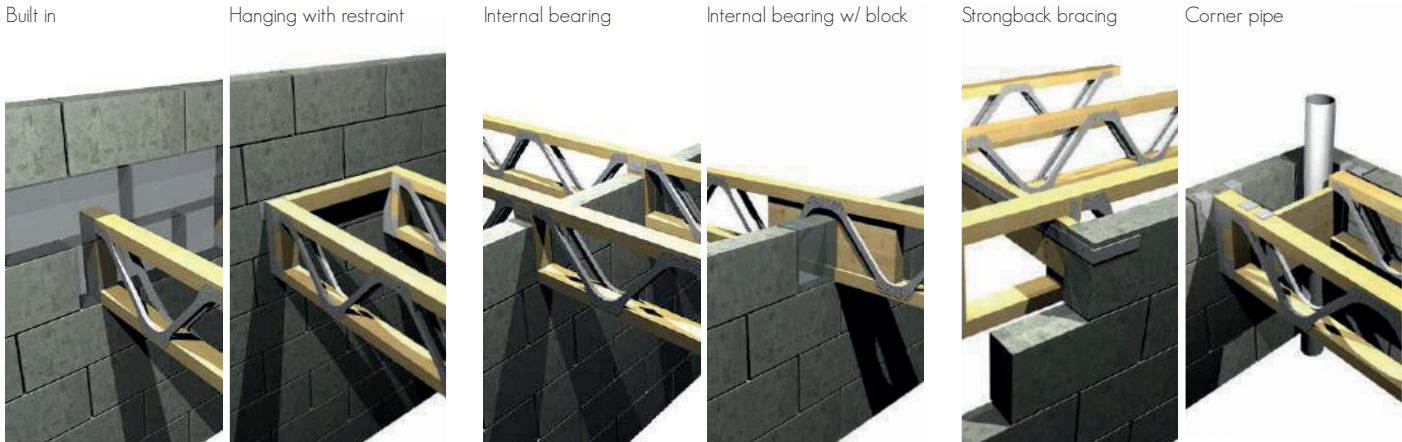
The advantages of a light product are obvious; easier handling, minimised requirement for lifting equipment, faster installation and reduced labour time.



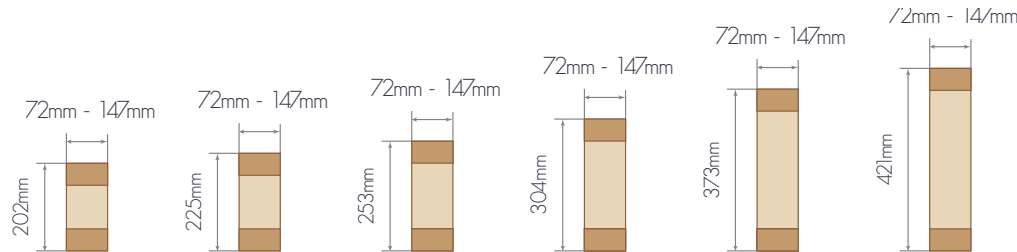
Using the latest software, our experienced design team can find a solution for any requirements, with each design being fully engineered and analysed, eliminating the need for costly engineers calculations or input.

Open metal web joist applications span further than traditional methods, offering a feasible solution for flat roofs and large flooring areas, where extra strength or service space is required.

All quotes offer floor decking as an optional extra, giving our clients the ability to purchase the required materials from one source with a delivery to suit their needs.



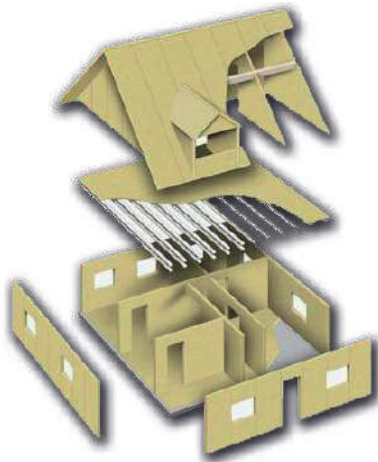
Offering our open web metal joists at a vast range of depths and widths gives us further options when designing the floor structure and allows us to offer the most economic, lightweight and low timber usage solution; made to measure to reduce site wastage.



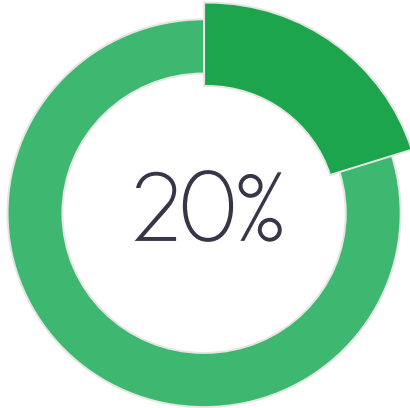
SPANDREL PANELS



Full technical information available upon request



“Harmony’s ability to provide cost effective solutions to challenging design issues has really made them stand out among their competitors.”

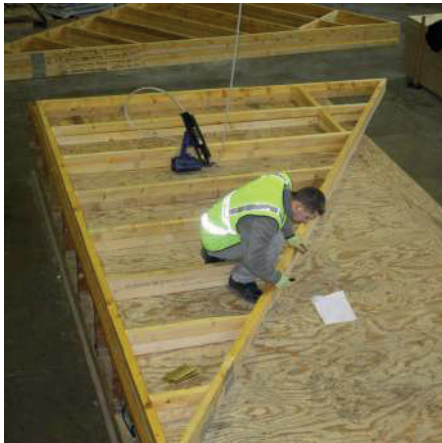


With each panel our clients benefit from a minimum of 20% cost saving compared to traditional masonry methods.

The more complex the roof structure, the greater the saving and reduced chance of on-site issues.

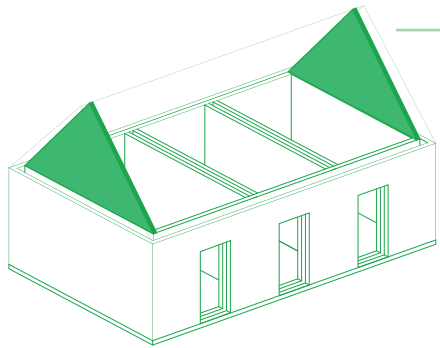
Spandrel and gable panels make it possible for our clients to fully erect the entire roof structure in one operation; saving time, cutting costs, reducing scaffolding requirements and minimising the health and safety issues associated with building high gabled walls in blockwork.

Through offering these panels, our clients benefit from dealing with one trade, removing organisational issues of managing multiple trades.



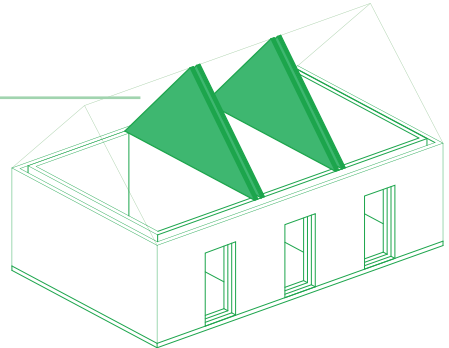
Manufactured by our Timber Frame department, the panels benefit from acoustic and fire properties whilst still offering a bespoke solution to the end user. Our clients benefit from a fully designed and engineered product, tailored to the exact dimensions of the roof trusses we supply.

Deliveries are made to suit the clients time plan. Each panel is securely wrapped in protective film with lifting straps attached to make installation as safe and secure as possible whilst still protecting the product.



Gable panels sit on top of the wall plate at the gable end of a roof structure.

Spandrel panels create a fire break wall between 2 or more adjoining units.



GLULAM ENGINEERED BEAMS



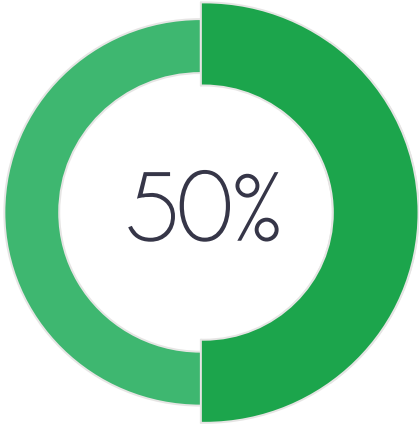
Full technical information available upon request



Laminated beams offer a replacement for steel beams and other structural support at a fraction of the cost whilst still boasting up to 90 minutes fire resistance. Further to these functional benefits, these beams possess an uncomparable natural and warm aesthetic beauty.

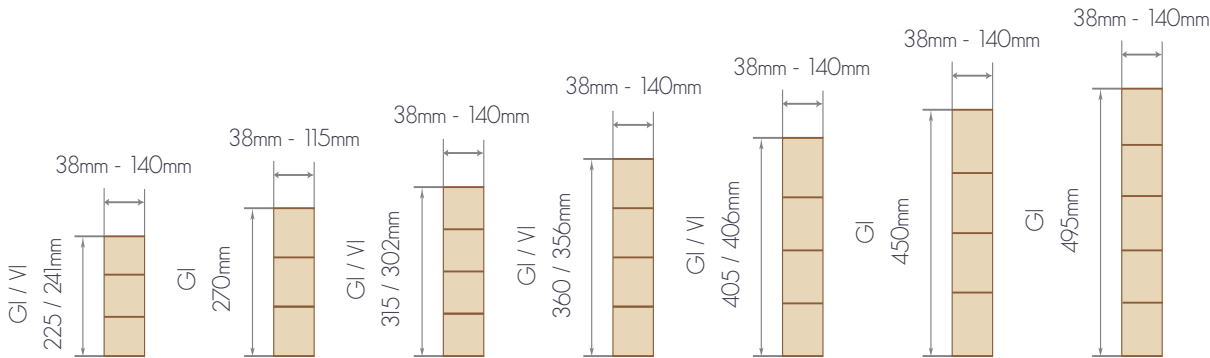
We use both Glulam and Versa-Lam beams, dependant on the project requirements.

“Professional in their approach and helpful in the design and specification of projects we have been involved with.”



Through utilising structural benefits of each layer of timber, this engineered timber is up to 50% stronger than solid sawn timber.

Laminated beams are also 33% lighter than steel and 83% lighter than concrete, making it much more managable on site.



...
Sustainability, durability
and feasibility are the
3 main aspects of any
structural project
...



ENVIRONMENT

Full environmental policy available online

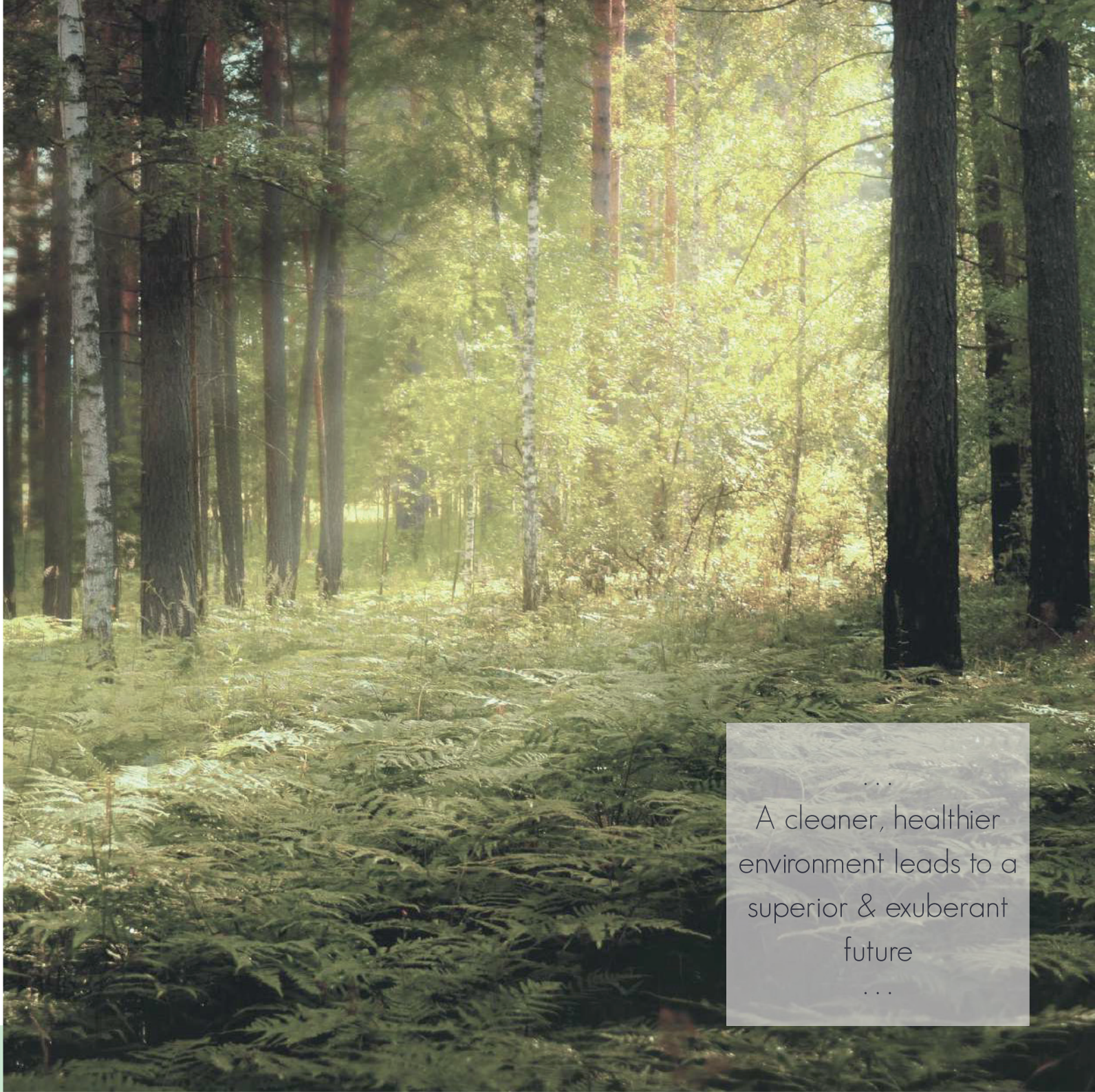
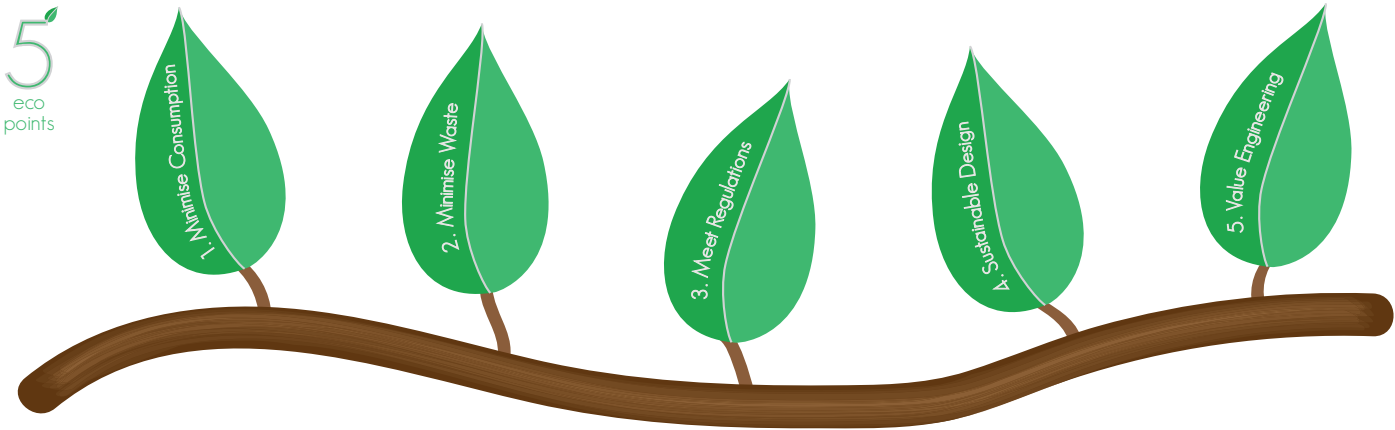


We understand that being environmentally conscious within our trade is absolutely essential and that when managed correctly, timber is a fully renewable resource.

The environmental impact becomes a factor in every decision we make and we encourage every member of our staff to consider and implement our '5 eco points' whenever and wherever possible to ensure our company maintains and exceeds our environmental standards.

Receiving our raw materials from PEFC certified suppliers ensures that for every 1 tree harvested, 2 are planted, resulting in expansion of our woodland and wildlife as opposed to reduction.

The PEFC help maintain and enhance biodiversity, protect existing ecologically important areas and prohibiting the use of hazardous chemical & GMO's.

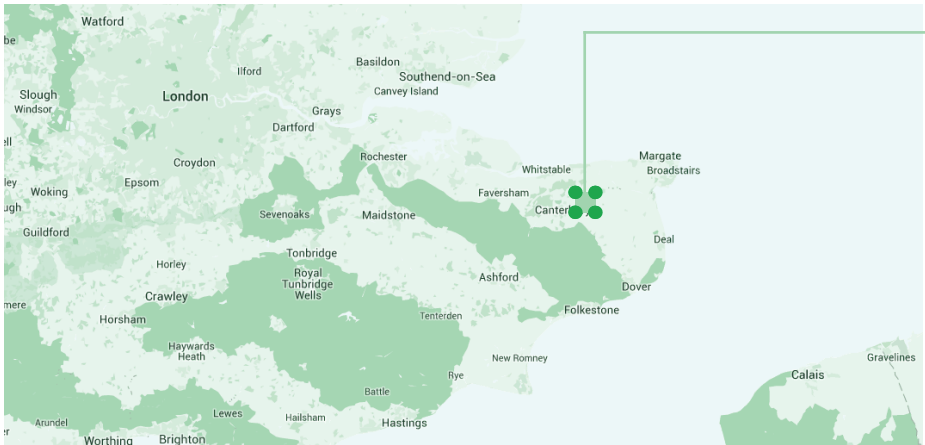


...
A cleaner, healthier
environment leads to a
superior & exuberant
future
...

CONTACT US

Our office & factory put customer service at the forefront of their work ethics and believe whether working with national house builders, regional house builders, building contractors, builders merchants or self builders, the positive relationship between the client and our business is paramount.

With our modern, fully equipped factory, we can cater for projects across the UK and where possible encourage our clients to visit for face to face discussions with any member of our team.



Units 1B & 2A
Canterbury Ind Park
Hersden, Canterbury
Kent CT3 4HQ
T (+44) 01227 712 322
F (+44) 01227 712 852
E info@harmonytimber.co.uk



When our clients have a question or query we provide the necessary means to make sure they receive the feedback required at the first instance where possible.

Whether making an enquiry, giving dimensions, approving a design, placing an order, querying delivery options, after sales care or simply checking on the development of a job, we make it our duty to get the information our client requires, as precise and as soon as it is possible.



t. HTS 01227 712 322
Roof Trusses, Open Web Metal Joists
& Glulam Engineered Beams:



t. HTF 01227 209 087
Timber Frame



Attended Phones
08:00 - 17:00

Message Service
17:00 - 08:00



(Programme for the Endorsement of Forest Certification schemes) PEFC is a non-profit, non-governmental organisation dedicated to promoting Sustainable Forest Management.
www.pefc.co.uk



The STA is the UK's leading timber organisation, which represents businesses and people. They lead the industry on quality, health & safety, education, technical knowledge and customer service.
www.structuraltimber.co.uk



(Trussed Rafter Association) TRA is the leading body dedicated to this product sector and is actively concerned with regulatory and other standards, health and safety and environmental issues.
www.tra.org.uk



The Considerate Constructors Scheme is a non-profit-making independent organisation concerned with construction activity that has a direct or indirect impact on the image of the industry.
www.ccscheme.org.uk



Harmony Timber Solutions UK/Harmony Timber Frame UK
 Unit 1b/2a, Canterbury Industrial Park, Island Road, Hersden, Canterbury, Kent, CT3 4HQ

t. HTS 01227 712 322 t. HTF 01227 209 087 e:info@harmonytimber.co.uk

www.harmonytimber.co.uk