

# Harmony Timber UK



## For all your Timber Engineering Solutions

TRUSSES  
METAL WEB POSI-JOISTS  
ROOF PANEL SYSTEMS  
FEATURE TRUSSES  
SIPS PANELS  
GABLE PANELS

SPANDREL PANELS  
TIMBER FRAME  
ROOFING & FLOORING METALWORK  
I-JOIST  
FLOOR CASSETTES  
PORCHES



“...better by design”

# Harmony Timber UK

For all your Timber Engineering Solutions



## About us

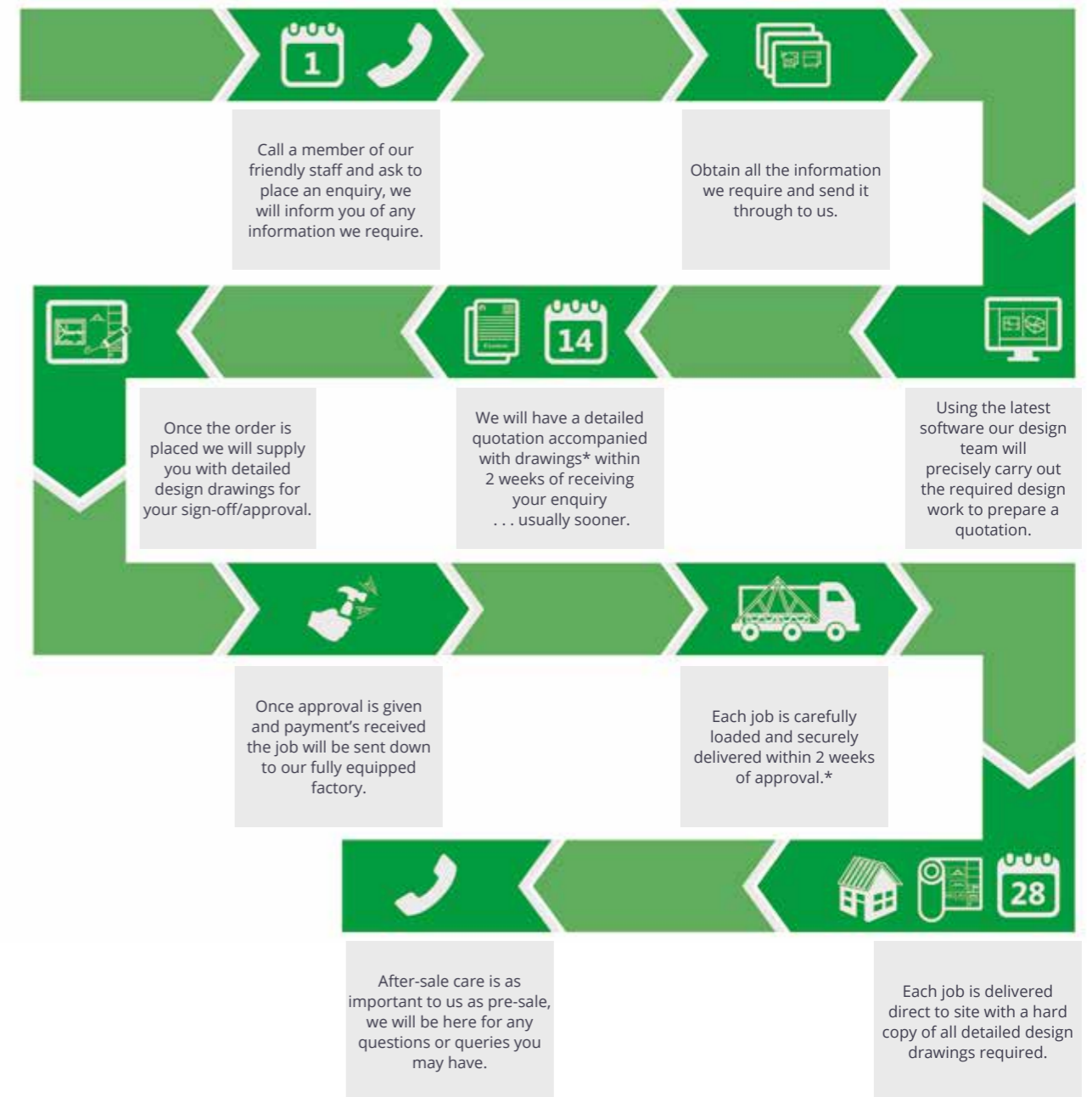
“ Our flexibility and ability to adapt to different requirements, tight deadlines, difficult builds and changes to legislation makes us the perfect choice for all of your timber frame needs. ”

We are proud of our reputation within the timber frame industry as both practitioners and innovators; supporting developers, self-builders and specialist builders.

A proven management team, which we have an exceptional knowledge of both timber engineering and energy efficiency in modern methods of construction, Harmony Timber continues to grow and deliver high quality products and services.



Units 1B & 2A  
Canterbury Industrial Park  
Island Road, Hersden  
Canterbury  
Kent  
CT3 4HQ  
  
T. HTS 01227 712 322  
T. HTF 01227 209 087  
E. info@harmonytimber.co.uk



\* Applicable to roof trusses and open web joists only

# Harmony Timber UK

For all your Timber Engineering Solutions



## Timber Frame



Full technical information available upon request.



Applying modern design and manufacture methods to one of the oldest forms of construction allows us to produce exceptionally accurate, air tight, durable structures which meet the most stringent regulations with excellent performance characteristics.

The practical and economical advantages of this product, combined with the reduced carbon footprint and sustainability, make timber frame housing a highly viable and beneficial construction method worldwide.

“ They were extremely professional, helpful and competitive. ”



With a typical 2 storey house our clients benefit from an approximate 30% saving on construction time. This stretches to 50% on 4 storey houses. Within a working week a fully erect and water tight structure can be achieved.



Each feature of our timber frame panels are purposely specified to give a high quality, valuable and hassle free solution.

Understanding the end users needs, our experienced team can provide an option which best suits their requirements. We realise that these needs span further than the material specifications, that's why we offer full design and engineering services, quality assurance, site visit assistance, erection services and technical guidance.



### Open Panel

Open panel construction has been evolving over the last 40 years. An open panel is studwork sheathed with Ply or OSB with a breathable, waterproof membrane fixed to the outside. Insulation is then fitted after installation, before a vapour proof barrier is tacked into place and then internal lining with plasterboard.



### Closed Panel

Precision engineered timber panels constructed using high quality and robust materials under controlled factory conditions. Delivered to site insulated and boarded, ready for internal finishes.

“...better by design”

# Harmony Timber UK

For all your Timber Engineering Solutions



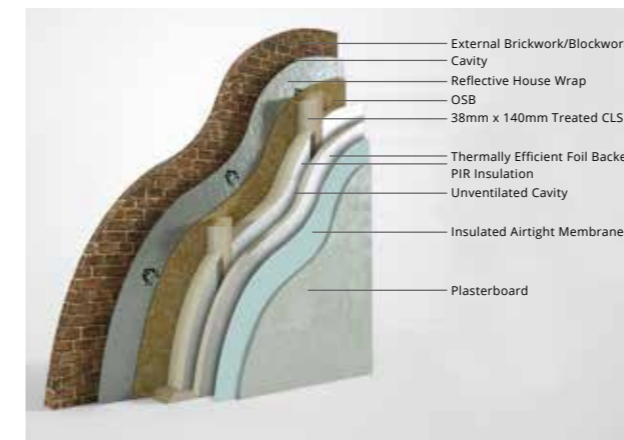
We pride ourselves on the high quality of our construction teams. We provide Timber Frame fitting teams which have a unique quality regarding their attention to detail and pride in their workmanship. We also provide strict quality checks on site which ensure that our timber frame kits are fitted in accordance with both our standard and bespoke details for each project.



Timber Frame Features	Timber Frame Benefits
Factory built	Reduced site waste - no offcuts, less clean-up!
Renewable materials	Environmentally friendly - keeping your project as green as possible!
Thermal & insulation options	Energy efficient - reducing heat loss, saving on utility bills!
Air tightness	Increased energy efficiency - even further savings on utility bills!
Reduced labour times	Earlier introduction of other trades - progress to interior work sooner!
Speed of construction	Greater cost savings - less time on site, time is money!

## Our Wall Options

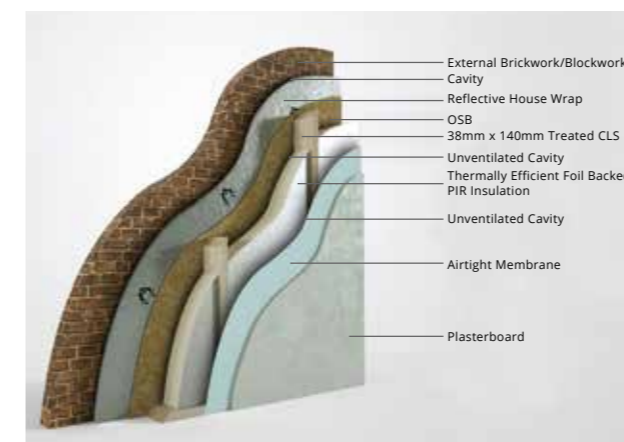
Below is a selection of a few of our wall options. For more technical information and for bespoke options please contact our technical department.



**Wall Option 1**  
U-value - 0.16 W/m<sup>2</sup>k  
Overall Width - 339mm



**Wall Option 2**  
U-value - 0.17 W/m<sup>2</sup>k  
Overall Width - 339mm



**Wall Option 3**  
U-value - 0.19 W/m<sup>2</sup>k  
Overall Width - 314mm

**Minimal U-value**  
We test our panels for a U-value rating to give a quantifiable measurement of the heat loss performance. The lower the U-value, the lower the heat loss and the higher the level of insulation.

**Superior airtightness**  
Airtightness can be achieved by installing a continuous seal which eliminates unintentional air leaking in or out of the building, resulting in; lower heating bills, well performing ventilation systems and fewer draughts.

# Harmony Timber UK

For all your Timber Engineering Solutions



## Roof Trusses

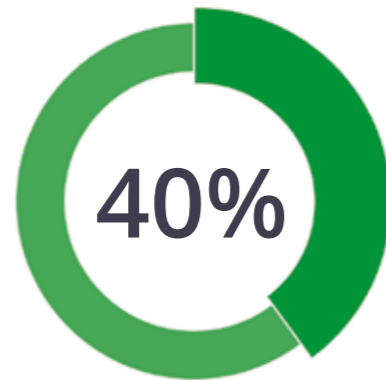
Full technical information available upon request.



“ Innovative and competitive in their design and price, understanding and flexible in their service and delivery. ”

Roof trusses use up to 40% less timber than traditional roof structures.

Each truss is analysed to obtain the most economic, low timber usage solution; this combined with the dramatic reduction of site waste gives the structure the lowest environmental impact possible.



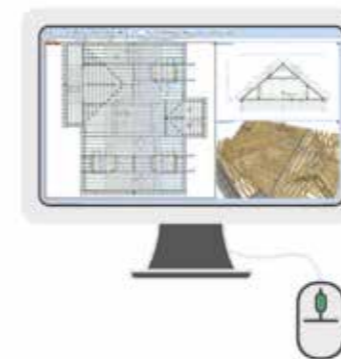
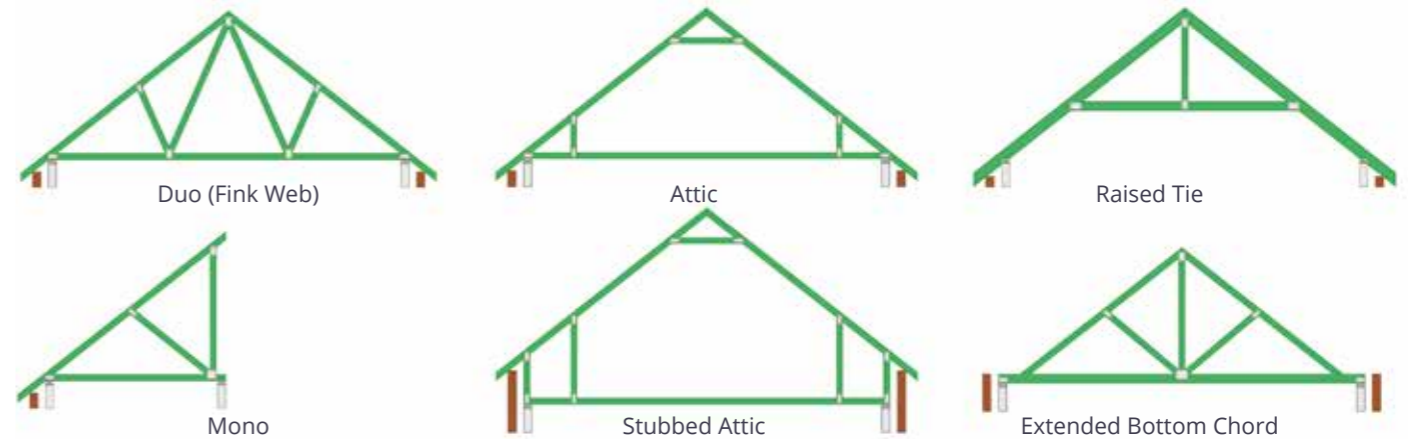
With a typical 2 storey house our clients benefit from an approximate 30% saving on construction time. This stretches to 50% on 4 storey houses. Within a working week a fully erect and water tight structure can be achieved.



The versatility of roof trusses knows no bounds. From standard mono trusses offering a simple structure to the most complex attic, raised tie or stubbed trusses; our design teams experience and innovativeness allows them to offer solutions to the most complex roof structures.

Using TR26 graded timber, our trusses benefit from a low carbon footprint, exceptional strength and high quality.

Every quote is supplied with layout drawings and profiles of each truss type used, giving the client a clear understanding of our proposal.



Every member of our truss design team is fully trained and able to use the most advanced software when designing and analysing the roof structure to Eurocode 5.

Designing to new Eurocode 5 regulations, our design team can offer the most efficient and workable solution possible.

The software offers a real time 3D visualisation which is used to give our clients a clear interpretation of what we are proposing.

We encourage our clients to visit our offices to outline plans they have, discuss their project with our design team, resolve any questions or queries they may have and help make a complex structure clearer.

“...better by design”

# Harmony Timber UK

For all your Timber Engineering Solutions



**Loose Timber**  
Supplied with roof kits when trusses are not feasible

**Dormer material**  
Available in loose timber or pre-fabricated

**Gable Ladder**  
Prefabricated and supplied with roof kits

**Attic Trusses**  
Straight run, offering a 'room in the roof' solution

**Spandrel & Gable panels**  
With pre-fabricated window opening

**Engineered Timber Lintel**  
Pre-cut to size or cut to size on site, such as Glulam

**Timber frame**  
Open panels shown, closed panel options also available

**Stairs**  
Design, manufacture and installation of bespoke staircases.

**Timber frame**  
With pre-fabricated door opening

**All products available Supply & Fit or Supply only.**

“...better by design”

# Harmony Timber UK

For all your Timber Engineering Solutions

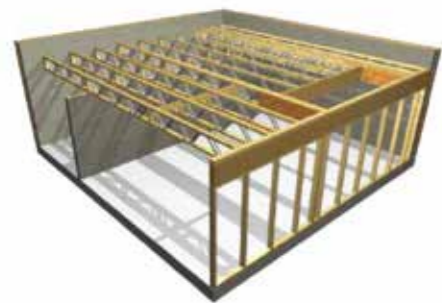


## Open Metal Web Joists

Full technical information available upon request.

Ranging from 202mm to 421mm deep and up to 12m long, our open web joists offer an adaptable, lightweight, durable and smart solution for any flooring requirements.

The aspect of this system which helps maintain its position as the most favourable flooring product for house builders worldwide is the large clearing between the struts, offering space for plumbers, electricians and heating contractors to utilise.



Combining the strength of metal struts with the lightness of timber allows our open web joists to be an extraordinary 40% lighter than comparable solid joists. The advantages of a light product are obvious; easier handling, minimised requirement for lifting equipment, faster installation and reduced labour time.

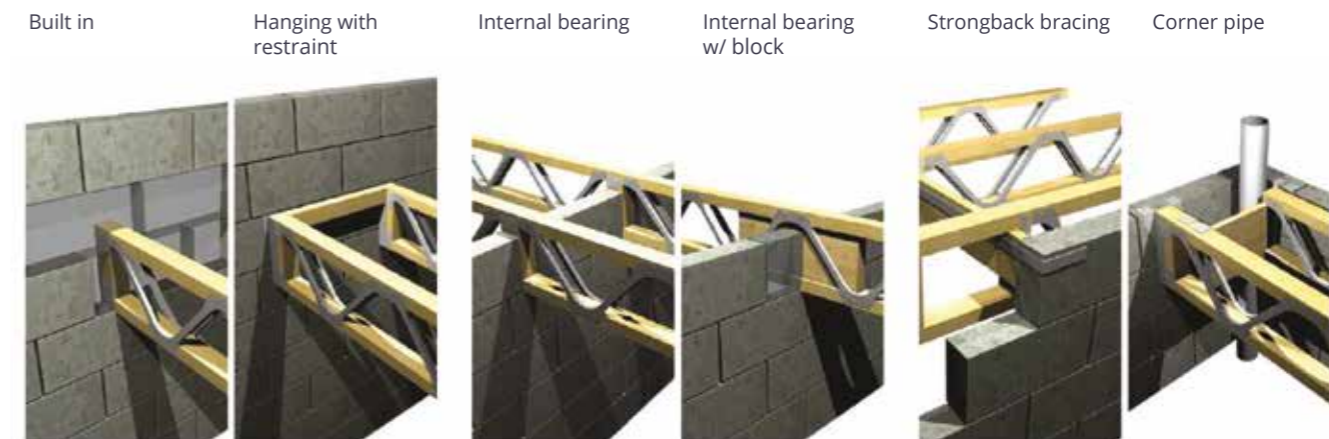


“ They provide a fast, friendly and efficient service from designs, through to delivery on site. ”

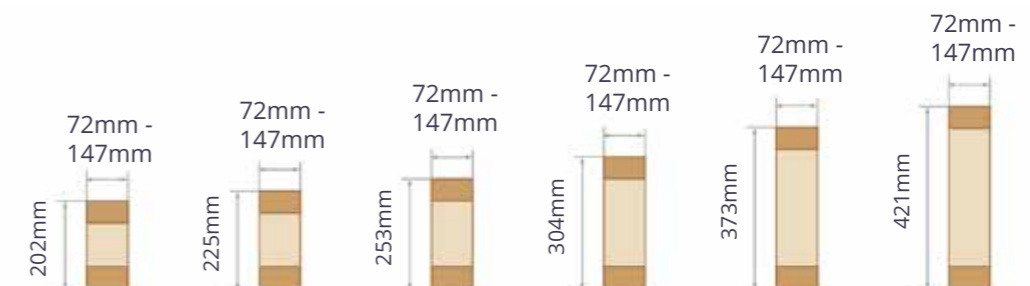
Using the latest software, our experienced design team can find a solution for any requirements, with each design being fully engineered and analysed, eliminating the need for costly engineers calculations or input.

Open web joist applications span further than traditional methods, offering a feasible solution for flat roofs and large flooring areas, where extra strength or service space is required.

All quotes offer floor decking as an optional extra, giving our clients the ability to purchase the required materials from one source with a delivery to suit their needs.



Offering our open web joists at a vast range of depths and widths gives us further options when designing the floor structure and allows us to offer the most economic, lightweight and low timber usage solution; made to measure to reduce site wastage.



“...better by design”

# Harmony Timber UK

For all your Timber Engineering Solutions



## Spandrel Panels

Full technical information available upon request.



Supplied as fire rated and robust detail timber frame panels. Spandrel and gable panels make it possible for our clients to fully erect the entire roof structure in one operation; saving time, cutting costs, reducing scaffolding requirements and minimising the health and safety issues associated with building high gabled walls in blockwork.

Through offering these panels, our clients benefit from dealing with one trade, removing organisational issues of managing multiple trades.

“ Harmony’s ability to provide cost effective solutions to challenging design issues has really made them stand out among their competitors. ”

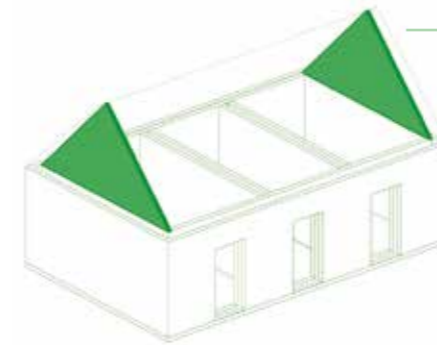


With each panel our clients benefit from a minimum of 20% cost saving compared to traditional masonry methods.

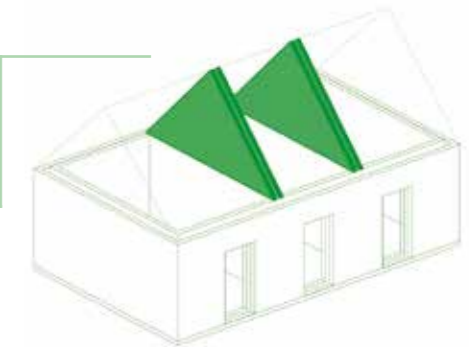
The more complex the roof structure, the greater the saving and reduced chance of on-site issues.

Manufactured by our Timber Frame department, the panels benefit from acoustic and fire properties whilst still offering a bespoke solution to the end user. Our clients benefit from a fully designed and engineered product, tailored to the exact dimensions of the roof trusses we supply.

Deliveries are made to suit the clients time plan. Each panel is securely wrapped in protective film with lifting straps attached to make installation as safe and secure as possible whilst still protecting the product.



Gable panels sit on top of the wall plate at the gable end of a roof structure.



Spandrel panels create a fire break wall between 2 or more adjoining units.



“...better by design”



# Harmony Timber UK

## For all your Timber Engineering Solutions



## Porches

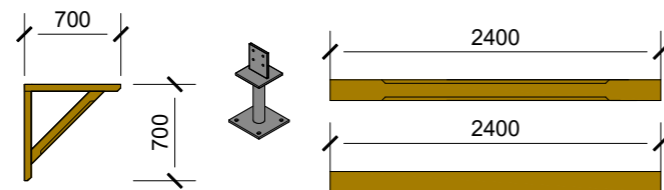


Full technical information available upon request.

- All timber joinery grade softwood. Oak options priced on application.
- Porch timbers supplied in planed finish for priming/painting/staining on-site. Priming can be quoted as an extra.
- Roof supplied in cassette form with posts/gallows supplied loose.
- Lead time 3 weeks from approval in softwood.
- Delivered prices upon application.
- Post bases can be supplied as an add on item.
- Fixings, membranes, battens, tiles or finishes excluded.
- Bespoke designs can be quoted upon request.

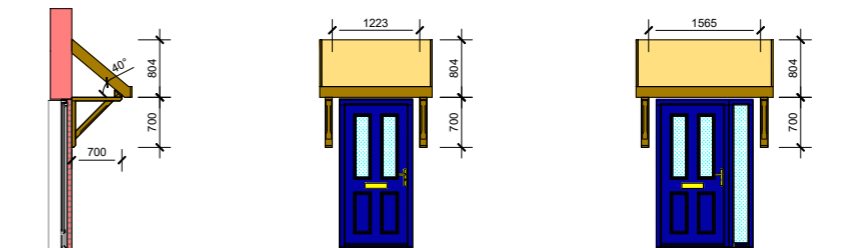
### Items available separately

- 700 x 700mm Gallows bracket in softwood
- 700 x 700mm Gallows bracket in Oak
- 100 x 100mm Softwood Post 2400mm
- 150 x 150mm Softwood Post 2400mm
- 150 x 150mm Softwood Post with stop chamfers
- Stainless steel post base

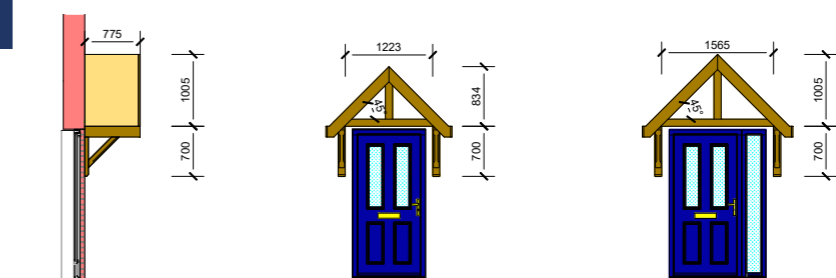


### STANDARD WIDE

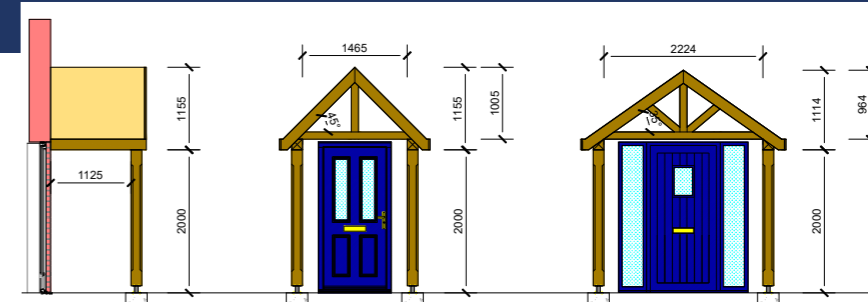
#### Fentham



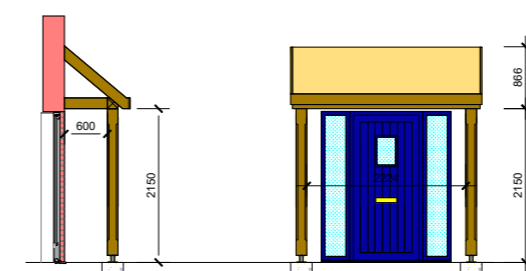
#### Eastcote



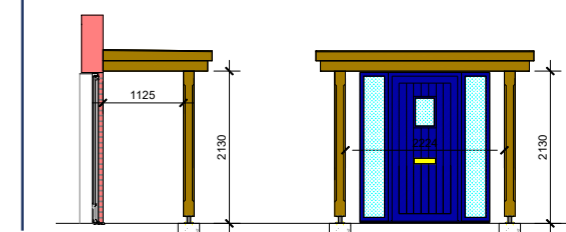
#### Packington



#### Arden



#### Hampton



## Offsite Manufactured Dormers

Full technical information available upon request.

Dormers enhance a 'Room in Roof' design and create additional full height space – we offer a standard prefabricated or bespoke dormer solution to ensure quality, enhance speed of build and reduce working at height. An insulated dormer built offsite as part of your total roof solution from Harmony Timber UK. All dormers are fully engineered to your design and supplied to site either as a 'kit' or 'complete' ready to install.



Fully Designed & Engineered

- Offsite manufactured
- Reduces on-site build time
- Addresses skills shortages
- Helps to meet high demand
- Availability of bespoke sizes
- Structural Dormer - Engineered
- Factory Insulated - Range of U-value options
- A1 Fire Rated Option
- Quick and easy to install
- Suitable for all finishes

### ROOF & FLOOR CASSETTES

Harmony Timber UK offers 245mm and 300mm deep I-Joists from stock which are the most popular sizes for domestic floors. If you require 225mm deep we can design and supply these in Posi-Joist. For commercial floors and roofs 350mm and 400mm deep



type D I-Joists are also available. I-Joists are a very cost effective alternative to solid timber floor joists and flat/shallow pitch roof members, eliminating shrinkage, splitting and warping.



## DORMERS

### The faster, safer, dormer option

#### Open Panel

The Harmony Timber UK Pre-fabricated Timber Dormer Kits are designed to reduce on-site time and labour costs, providing a simple and safe ready-to-fit solution for housebuilders – an ideal alternative to forming by hand.

#### Features & Benefits

Each dormer kit consists of individual side cheeks, gable panel and roof trusses, for a complete solution in one package:

- Simpler – single trade solution.
- No cutting – reduces installation time and labour costs.
- Safer build – working at height reduced.
- Pre-clad, ready for exterior finish – saves time on-site.



#### Technical Details

Dormers are constructed from 47x97mm TR26 Timber, they also include a Gable Panel and Roof Trusses. A Specific opening is created to accommodate the correct window height and size. The Dormers are then clad with 9mm OSB3 to the entire external face. To complete the installation, necessary timber is supplied to valley the Dormer to the Roof Trusses.

# Harmony Timber UK

For all your Timber Engineering Solutions

"Sustainability, durability and feasibility are the main aspects of any structural project".

## Glulam Engineered Beams

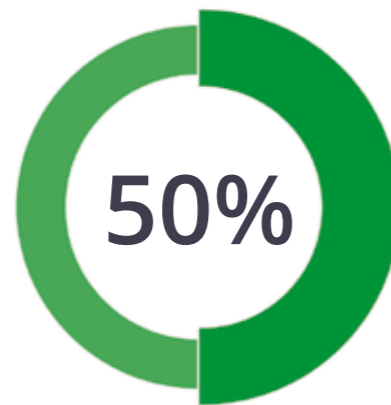
Full technical information available upon request.



### Benefits of using Glulam include:

- Inherent load bearing strength.
- Ability to design large wooden spans to create open spaces.
- An eco-friendly alternative to concrete and steel.
- Durable, light and easy to handle.
- Requires no boxing in or cladding.
- Glulam can be pre-cambered to counteract the effects of deflection in long spans.
- Competitive price makes it a clear choice for all types of construction.

"Professional in their approach and helpful in the design and specification of projects we have been involved with."

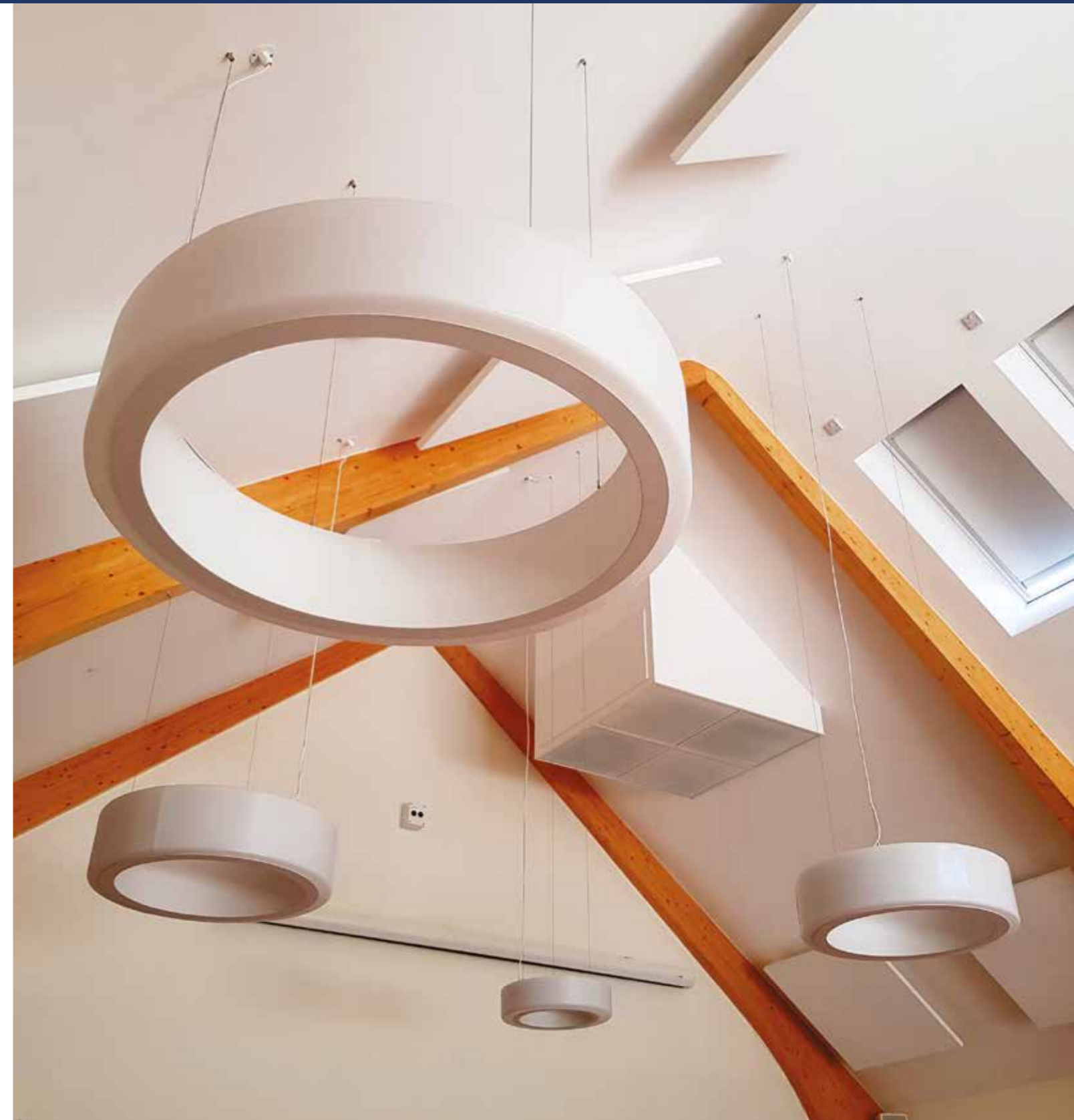


Through utilising structural benefits of each layer of timber, this engineered timber is up to 50% stronger than solid sawn timber.

Laminated beams are also 33% lighter than steel and 83% lighter than concrete, making it much more manageable on site.



Stock List					
45 x	66 x	90 x	115 x	140 x	Other
225	225	225	225	225	140 x 140
253	270	270	270	270	160 x 160
304	315	315	315	315	180 x 180
373	360	360	360	360	200 x 200
405		405	405	405	220 x 220
450		450	450	450	240 x 240
495		495	495	495	
				540	
				630	



"...better by design"

# Harmony Timber UK

## For all your Timber Engineering Solutions

“A cleaner & healthier environment leads to a superior & exuberant future”.

## Environment

Full technical information available upon request.



We understand that being environmentally conscious within our trade is absolutely essential and that when managed correctly, timber is a fully renewable resource.

The environmental impact becomes a factor in every decision we make and we encourage every member of our staff to consider and implement our '5 eco points' whenever and wherever possible to ensure our company maintains and exceeds our environmental standards.

Receiving our raw materials from PEFC certified suppliers ensures that for every 1 tree harvested, 3 are planted, resulting in expansion of our woodland and wildlife as opposed to reduction.

The PEFC help maintain and enhance biodiversity, protect existing ecologically important areas and prohibiting the use of hazardous chemicals and GMO's.

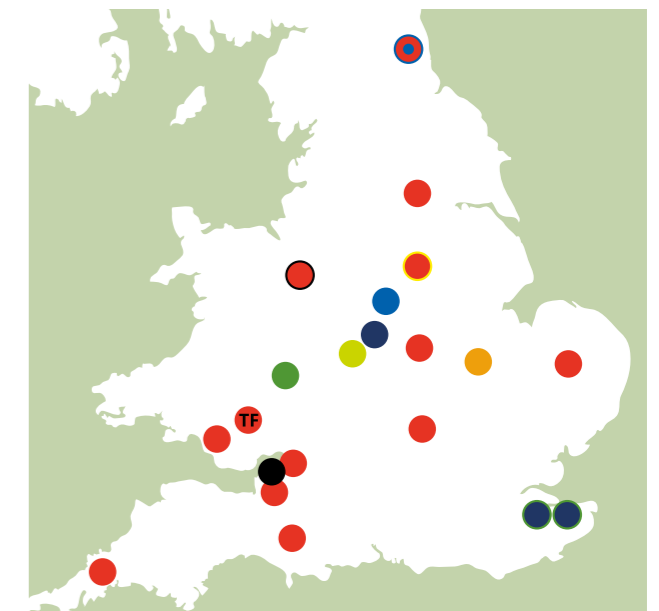


Our office and factory, puts customer service at the forefront of our work ethics and we believe whether working with national house builders, regional house builders, building contractors, builders merchants or self builders, the positive relationship between the client and our business is paramount.

With our modern, fully equipped factory, we can cater for projects across the UK and where possible encourage our clients to visit for face to face discussions with any member of our team.

When our clients have a question or query we provide the necessary means to make sure they receive the feedback required at the first instance where possible.

Whether making an enquiry, giving dimensions, approving a design, placing an order, querying delivery options, after sales care or simply checking on the development of a job, we make it our duty to get the information our client requires, as precise and as soon as it is possible.



WB Group of Companies

- Key
- Crendon
  - Wyckham Blackwell
  - Timber Innovations
  - Crendon Lynx
  - Glosford
  - Smartroof
  - Crendon Truss-Tech
  - Crendon Timber Frame
  - Harmony Timber Frame/Solutions
  - David Smith St Ives
  - Glulam Timber Engineering
  - Crendon Roof Truss Company



T. 01227 712 322  
E. info@harmonytimber.co.uk

Roof Trusses, Open Web Metal Joists  
& Glulam Engineered Beams



T. 01227 209 087  
E. info@harmonytimber.co.uk

Timber Frame  
Floor & Roof Cassettes

Attended Phones: 08:00 - 17:00 | Message Service: 17:00 - 08:00

“...better by design”

# Harmony Timber UK

## For all your Timber Engineering Solutions



Harmony Timber Solutions UK/Harmony Timber Frame UK  
Unit 1b/2a, Canterbury Industrial Park, Island Road, Hersden, Canterbury, Kent, CT3 4HQ

t. HTS 01227 712 322 t. HTF 01227 209 087 e: info@harmonytimber.co.uk

[www.harmonytimber.co.uk](http://www.harmonytimber.co.uk)



(Programme for the Endorsement of Forest Certification schemes) PEFC is a non-profit, non-governmental organisation dedicated to promoting Sustainable Forest Management.  
[www.pefc.co.uk](http://www.pefc.co.uk)



The STA is the UK's leading timber organisation, which represents businesses and people. They lead the industry on quality, health & safety, education, technical knowledge and customer service.  
[www.structuraltimber.co.uk](http://www.structuraltimber.co.uk)



(Trussed Rafter Association) TRA is the leading body dedicated to this product sector and is actively concerned with regulatory and other standards, health and safety and environmental issues.  
[www.tra.org.uk](http://www.tra.org.uk)



ISO 45001 requirements that will help organisations improve safety and create safer working conditions.



CATG is approved by the UK Accreditation Services as a certification body for ISO 9001. ISO 9001 is suitable for any organisation looking to improve how it is run and managed.



CATG is approved by the UK Accreditation Service as a certification body for ISO 14001. ISO 14001 is seen as the main framework for an environmental management system.



The CATG Frame Mark accreditation is an independent review of our timber frame panel quality control systems. It ensures that we are upholding the highest standards in the industry and providing a consistent service and product to our customers.

“...better by design”